

Matter 5 – 24

This concerns the Site Specific issues in relation to the Sherwood Area and the Inspector has raised the question of whether the policies include adequate and appropriate safeguards with regard to the potential effects of development on, inter alia, biodiversity and local amenity. In this respect, the continuing assessment of Site ED/Ho/2 off Mansfield Road, Edwinstowe has concluded that development on the site could have a negative impact on the Sherwood Forest Country Park and for that reason it would need at least to incorporate a Strategic Landscape Buffer. Accordingly, it is considered that the continuing allocation of that site does not include the required safeguards with regard to biodiversity and local amenity because, in the light of the reasonable alternative that has been put forward, there is simply no need for the identification of this site for housing purposes. Moreover this is clearly not appropriate in an instance where such extensive buffer provision needs to be incorporated.

Matter 5 – 27

In respect of sites within the Mansfield Fringe Area the Inspector has raised the question of whether the policies include adequate and appropriate safeguards with regard to the potential effects of development on, inter alia, the historic environment. In this respect it is considered that the policies do not incorporate the appropriate safeguards in respect of Site CI/MU/1 at the former Clipstone Colliery because there appears to be a presumption that the Listed headstocks will be allowed to be removed whereas all the indications from the bodies involved, ie English Heritage and Nottinghamshire County Council are, to the contrary, that the Authority should proceed on the basis of the stronger likelihood that they will not be allowed to be removed. Consequently the wrong approach has been adopted without sufficient regard to the potential effects of the development on the historic environment.

General Comment

In the context of both of the above matters it has previously been pointed out that within the earlier site selection process, sites were discounted which would have a significant negative impact on nationally and internationally important nature conservation sites and national heritage assets. Both of these restrictions apply in relation to the above sites because the Sherwood Forest Country Park is of both national and international importance as a nature conservation site and by virtue of the fact that the headstocks are listed they are by definition a national heritage asset.

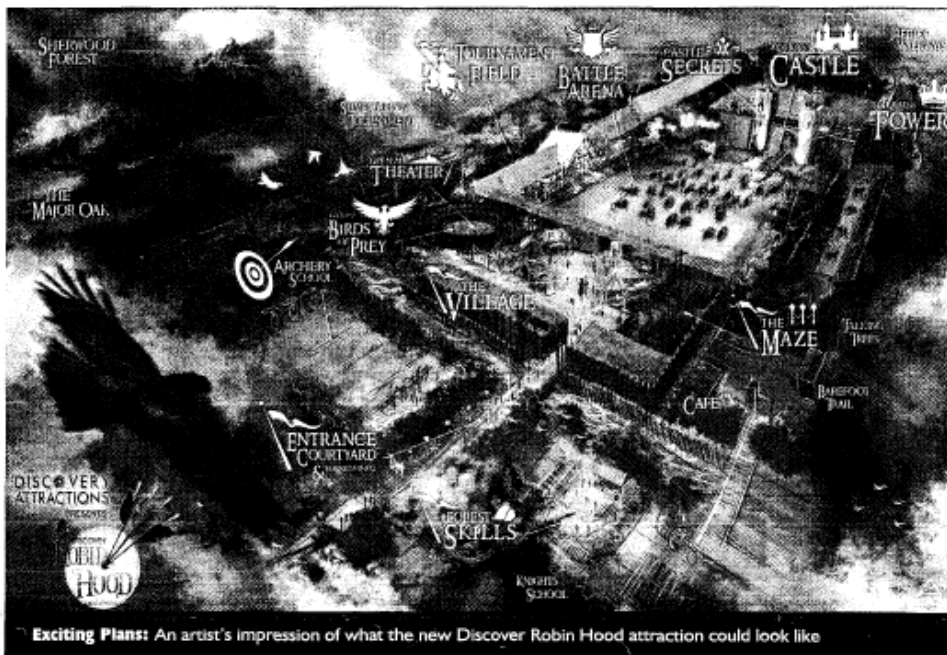
Furthermore, the attached recent newspaper article announces a planned investment to significantly upgrade the Sherwood Forest visitor attraction including the natural history interests and in itself this scheme could generate substantial additional traffic on the village's road network that will be further strained by this.

ian baseley associates

BowringLDFMatter5

November 2012

Economic boost for Sherwood



Exciting Plans: An artist's impression of what the new Discover Robin Hood attraction could look like

le
t

st

their
ent its
faster

d. The
iths as

om
r
or

I invite
id
May
and
essary
ence
sich
ill be

i
e
ext
an
eeds
ctor
ars."

d, in
t.
e
st
r
the

A £13m privately funded investment plan to create a world class Robin Hood experience and protect historic Sherwood Forest will provide a major boost for the local economy, says the County Council.

Around 100 people could be employed through plans for a new Sherwood Forest visitor attraction which will also generate huge visitor spend for the local economy and vital investment for the forest itself.

The Council will work with Discovery Attractions to take the legend of Robin Hood onto its next exciting chapter, while also guaranteeing continued free public access to Sherwood Forest and its ancient oaks, and preserving its unique ecology and natural surroundings.

The first phase of the project which

includes a brand new visitor centre, café and shop to replace the existing facilities will open in summer 2014 and the new Discover Robin Hood attraction will welcome its first visitors in spring 2015.

The new attraction will be built on county council-owned land (known locally as Naish's Field) opposite the existing nature reserve and visitor centre, restoring the current site and car park to the forest.

The Discovery Attractions team has a combined experience of over 100 years and an impressive track record for their contributions and involvement in world class visitor attractions in the UK.

The Discover Robin Hood proposal promises:

- A world-class visitor attraction to promote the legend, life and times of Robin Hood and his band of merry men
- Interactive, futuristic tourist features amid the settings of a medieval castle

complete with fortified ramparts made from local materials

- Free access to a courtyard offering a taster of medieval activities and a gateway to Sherwood Forest which retains its free public access.

- Comprehensive plans to promote the natural habitats and natural history of Sherwood Forest – led by the existing county council ranger team.

Coun John Cottey, Culture Committee Chairman, said: "This will put Sherwood Forest, Robin Hood's legendary home, back on the map, protect the ancient forest for future generations and will generate a major economic boost."

Rob Gray, Discovery Attractions' Marketing Director, said: "Robin Hood is a global brand that deserves to be celebrated, and where better to do this than at his spiritual home of Sherwood Forest?"

Ashes' £30 million economy boost